



# PTE Academic and Me

A helpful guide to the next steps of your  
PTE Academic journey.

# About this booklet

Thank you for choosing PTE Academic.

Now that you have booked your test date, you may be wondering what happens next.

This simple guide will lead you through the next stages of your journey, to help you feel ready for test day.

# About PTE Academic

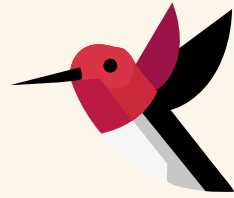
PTE Academic is a computer-based secure English language test, that assesses the four key language skills of listening, reading, speaking and writing.

The test is three hours long and is split into timed sections, as shown on the next page. You can see that the timings of each section can vary slightly, but the test will always last three hours in total.

There are 20 different types of question. Some of the questions will assess more than one of the key skills at the same time, e.g. reading and speaking together.

“*PTE Academic reflects  
real-life language skills*”





## Personal Introduction

A chance to introduce yourself – this is not scored

## Speaking and Writing

Part 1

77–93 minutes

## Reading

Part 2

32–41 minutes

## Optional break

You may choose to have a ten minute break at this point

## Listening

Part 3

45–57 minutes



For a more detailed overview of the test, please visit [www.pearsonpte.com/testme](http://www.pearsonpte.com/testme)

Click on the section called *About PTE Academic*

# Preparing for the test

It is important to prepare for PTE Academic, whatever your level of English. Being well prepared will give you the best chance of achieving the score you need.

A wide range of preparation resources can be found on our website, including:

- **The Official Guide to PTE Academic** – everything you need to know about the test, including 200 practice questions and tips, with sample answers on attached CD ROM
- **Practice Test** – outlines what to expect from PTE Academic and builds your confidence
- **Test Taker Handbook** – guides you through the procedures and requirements of taking the test. We recommend that you read this document!
- **Test Tutorial** – our multimedia or PDF tour gives a detailed overview of the test, including insight into each of the 20 question types. Past test takers have told us they found this very helpful!
- **Test Tips Booklet** – simple test tips for each of the 20 question types. Highly recommended if you are short of time
- **Preparation Courses** – sign up for a preparation course with one of our approved partners



For further information,  
please visit [www.pearsonpte.com/prepare](http://www.pearsonpte.com/prepare)

“*The preparation material is very helpful*”

# On test day

It is normal to feel nervous before an important test, so we have thought up some useful tips that should help your test day to run smoothly:



Get a good night's sleep before your test



Eat a decent meal before setting off



Check directions and travel arrangements carefully before departing



Allow plenty of time and arrive at least 30 minutes before your test appointment



Remember to bring the correct ID (make sure you check the full ID policy in the *Test Taker Handbook*)



Listen carefully to all instructions from the test center administrator



Empty your pockets and leave all belongings in the lockers provided. Remember that you are not allowed to access your mobile phone, even during the optional break

Last but not least:  
Stay calm and do your best!



“An excellent test taking experience”

# Test room tips



Tip: Remember that each section of the test is strictly timed.



Tip: PTE Academic mirrors the real world of studying in an English environment – so there will be other people speaking in the test room, just like in a classroom!



Tip: Make sure you have read the *Test Taker Handbook*!



Tip: If you choose to take the optional break, make sure you are back in the test room just before the ten minutes have passed.



Tip: Recordings won't be repeated so make sure you listen very carefully.



Tip: You won't be able to go back and change your answers.



# What's next?

After your test, look out for an email from us informing you that your score report is ready. This will include details on how to access and assign your score to your chosen destination.

Remember that we don't issue paper certificates – only scores assigned via our secure online platform are considered to be valid.

If you have further questions, please contact the support team in your region:

#### Europe, Middle East and Africa

☎ (toll): +44 161 855 7431

[pte-acustomersupportemea@pearson.com](mailto:pte-acustomersupportemea@pearson.com)

#### Central Asia, East Asia, South Asia, South East Asia, Australia and New Zealand

☎ from Australia: 1 800 190 719

☎ from China: 400 881 1 286

☎ from India (toll free): 000800 440 2020

☎ from South Korea: 0804 680 880

☎ from other countries (toll): +603 8314 9652

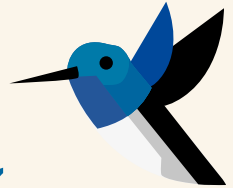
[pte-acustomersupportapac@pearson.com](mailto:pte-acustomersupportapac@pearson.com)

#### North and South America

☎ from United States / Canada: 1 800 901 0229

☎ from other countries (toll): +1 952 681 3872

[pte-acustomersupportamericas@pearson.com](mailto:pte-acustomersupportamericas@pearson.com)



“

*PTE Academic  
was a worthwhile  
experience that  
prepared me for  
the real world*

”

We hope that you found this document useful and we wish you luck for your test.

Continue the conversation at:

